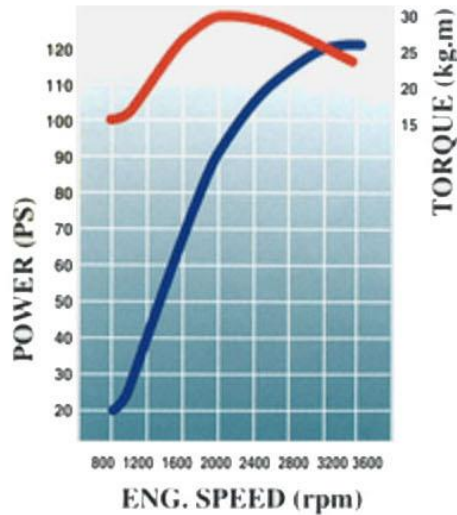




## DIESEL FOR WATER PUMP



MODEL	D4AL	
POWER MAX	90KW/120PS/3,400RPM	
POWER AT 3000RPM	<b>85KW/115PS/3000RPM</b>	
DISPLACEMENT (cc)	3,298	
BORE x STROKE (mm)	100 x 105	
MAX. TORQUE (kg.m/rpm)	30 / 2,000	
DIMENSION (mm)	LENTH	815
	WIDTH	695
	HEIGHT	765.5
WIEGHT(kg)	DRY	350
	WET	365
CYCLE	4	
COOLING TYPE	WATER COOLING	
NO. OF CYLINDER	4 IN LINE	
FIRING ORDER	1 - 3 - 4 - 2	
COMPRESSION RATIO	16.5	
INJECTION TIMIG(BTDC)	10 °	
ASPIRATION	TURBO CHARGER INTERCOOLER	
INJECTION PUMP TYPE	BOSCH A	
GOVERNOR TYPE	ALL SPEED	
C/CASE	CYL PITCH	120
	H + h(mm)	297.5 + 75
	CYL. LINER	DRY
IDLE RPM	LOW	750 ± 25
	HIGH	3,850
START MOTOR(V-kW)	24 - 3.2	
LUB. OIL(SAE)	20W-50	

# Technical data

Pump name

125x100 FS2JCA 5

Customer	Date 01-February -2021	Company
Contact	Item no.	Issued by
Phone	Project	Phone
E-mail	Project ID	E-mail

## Requested data

1	Pump type	End Suction Volute Pump	Fluid	Water, clean
2	Number of pumps / Reserve	1 / 0	Liquid temperature	°C 20
3	Flow	m <sup>3</sup> /h 0	Kin. viscosity	mm <sup>2</sup> /s 1
4	Head	m 0	Vapour pressure	bar 0.022
5	Geodetic head	m 0	PH value	7
6	Inlet pressure (pin)	bar 0.1	Density	kg/dm <sup>3</sup> 1
7	Available system NPSH	0	Solids	Weight % 0
8	Ambient temperature	°C 20		

## Pump

9	Pump name	125x100 FS2JCA 5	Frequency	Hz 50
10	Design	End Suction Volute Pump	Installation type	bare shaft
11	Manufacturer	PTEI	Impeller Diameter	Max. mm 273
12	Speed	1/min 2900		Designed mm 273
13	No. of Stage	1		Min. mm 216
14	Connection Suction side	JIS 10K	Flow	Operating m <sup>3</sup> /h
15	Connection Discharge side	JIS 10K		Max- m <sup>3</sup> /h 327
16	Max Working Pressure	bar 10		Min- m <sup>3</sup> /h 120
17	Shut-off head	bar 9.13	Head	Operating m
18	Total weight	kg See the table of "Dimensions".		- (Qmax.) m 61.8
19	Shaft power	kW		- (Qmin.) m 91.0
20			Max. Shaft Power at max. impeller	kW 74.79
21	Required pump NPSH	m	Efficiency	%

## Materials

22	Casing	Cast iron	M.S.mating ring	Ceramic
23	Impeller	Bronze	M.S.seal ring	Carbon
24	Shaft	403 Stainless steel		
25	Casing ring	Bronze		
26	Ball bearing	.		
27	Mechanical seal	.		

## Motor

28	Manufacturer	without motor	Insulation class	
29	Type	without motor 3	Phases	3~
30	Specific design	without motor / 50 Hz / Pole pairs 1	Frame size	
31	Rated power	kW -	Weight	kg 0
32	Number of poles	2	Electric voltage	V 0
33	Speed	1/min -	Electric current	A 0
34	Degree of protection	--		
35				

## Remarks

# Performance curve Pump name 125x100 FS2JCA 5

Customer	Date 01-February -2021	Company
Contact	Item no.	Issued by
Phone	Project	Phone
E-mail	Project ID	E-mail

### Requested data

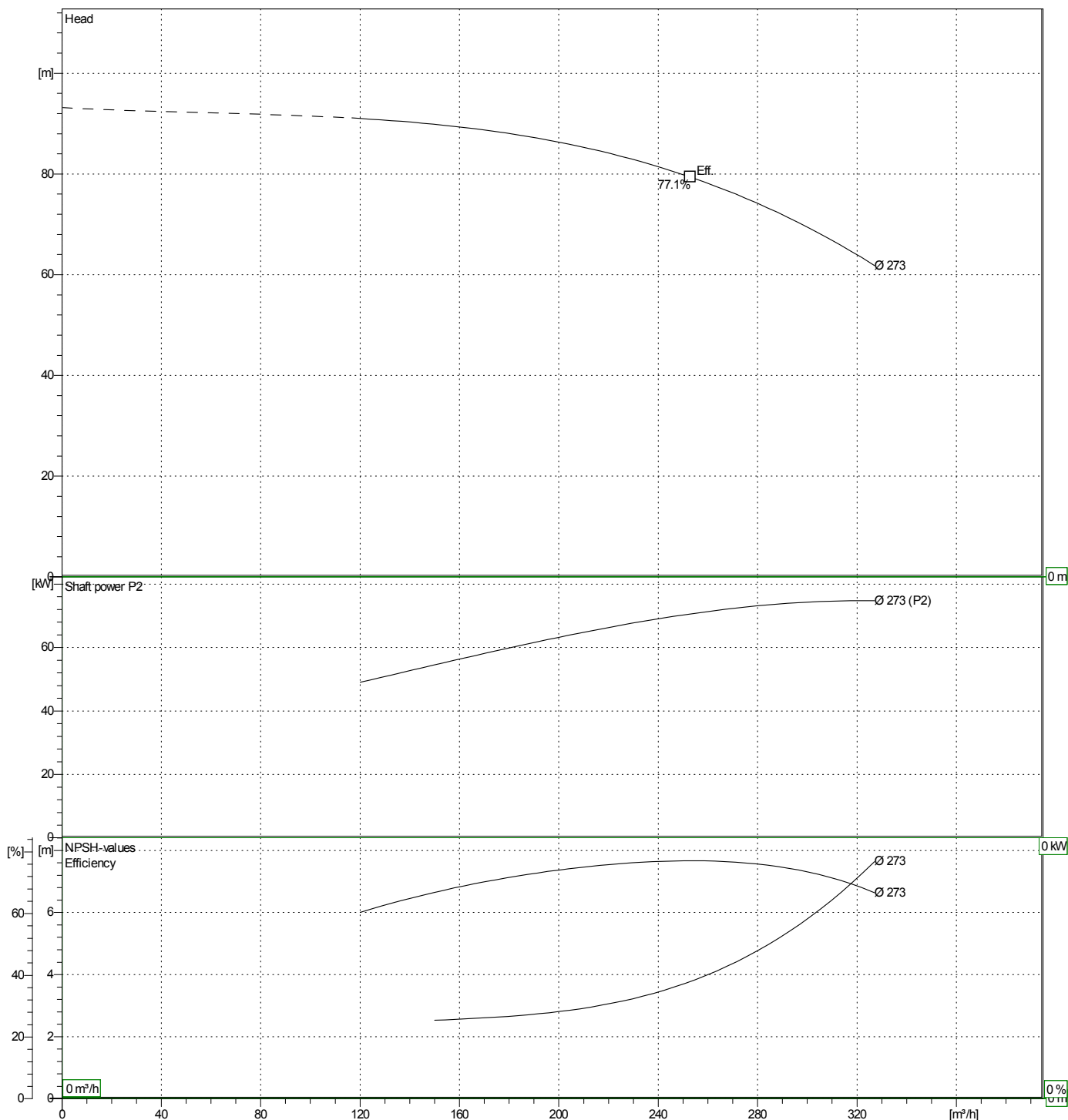
1	Flow	m <sup>3</sup> /h	0
2	Head	m	0
3	Geodetic head	m	0

### Pump

Operating Flow	m <sup>3</sup> /h	Frequency	Hz	50
Operating Head	m	Number of poles	2	
Impeller Diameter	Designed mm	273	Speed	1/min

Test standard: ISO 9906:2012 - Grade3B

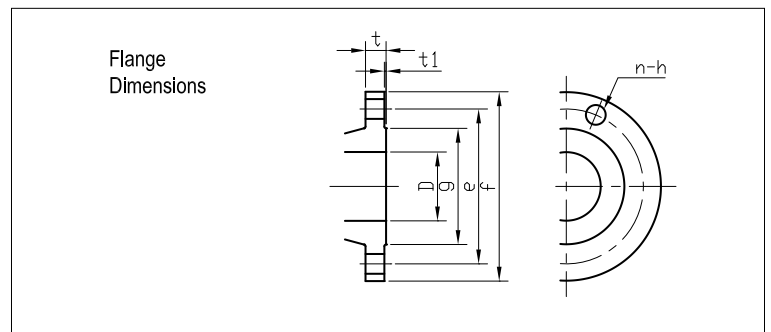
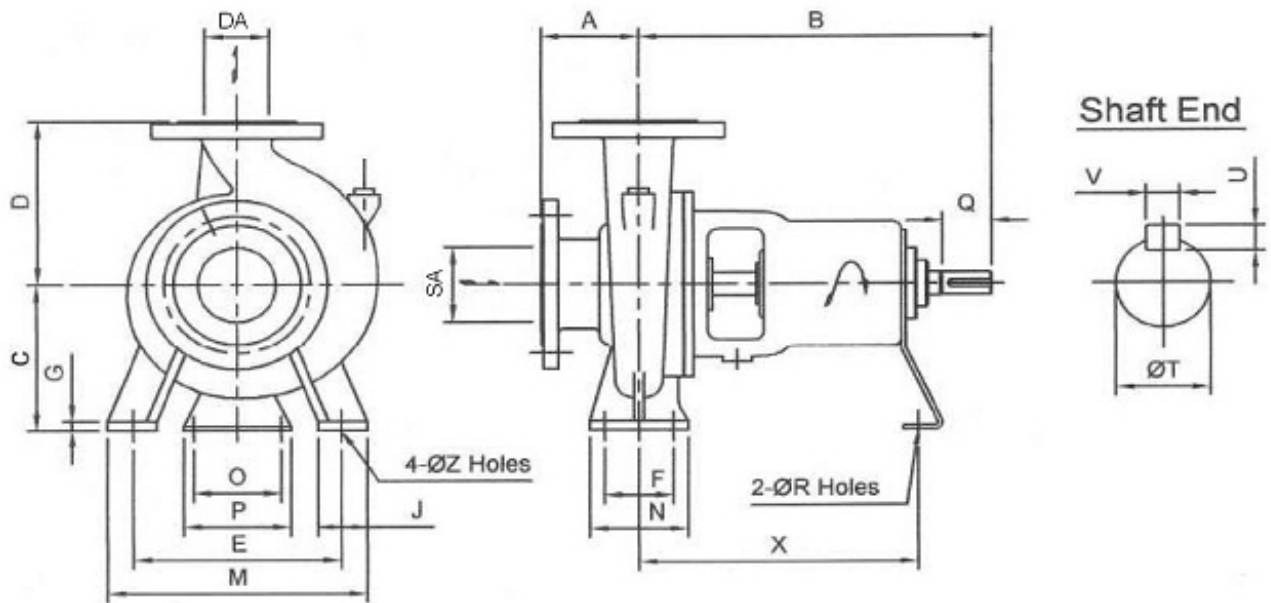
Water, clean [100%] ; 20°C; 0.9983kg/dm<sup>3</sup>; 1mm<sup>2</sup>/s



# Dimensions

Pump name 125x100 FS2JCA 5

Customer	Date 01-February -2021	Company
Contact	Item no.	Issued by
Phone	Project	Phone
E-mail	Project ID	E-mail



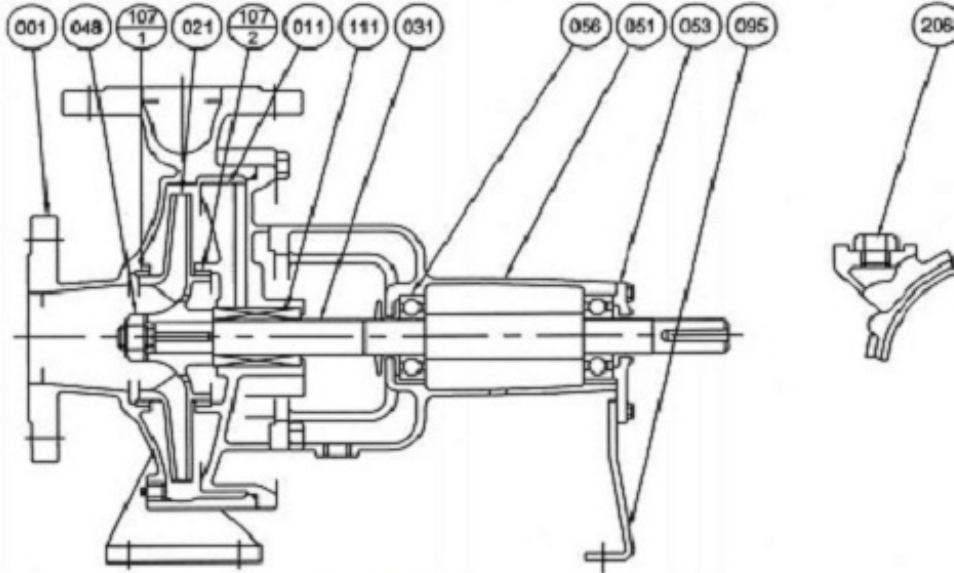
Total weight : 108 kg

Pump dimensions		mm		Suction side		mm		Discharge side		mm	
A	140	Q	80	D	125	D	100				
B	360	R	17	e	210	e	175				
C	225	SA	125	f	250	f	210				
D	280	T	38	g	182	g	151				
DA	100	U	8	h	23	h	19				
E	315	V	10	n Num	8	n Num	8				
F	120	X	285	t	24	t	24				
G	16	Z	19	t1	2	t1	2				
J	80										
M	400										
N	160										
O	110										
P	150										

# (1/2) Construction

Pump name 125x100 FS2JCA 5

Customer	Date 01-February -2021	Company
Contact	Item no.	Issued by
Phone	Project	Phone
E-mail	Project ID	E-mail

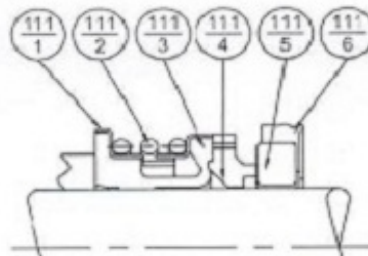
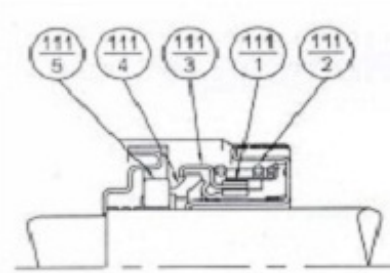


**Model FH**

50x40 FSHA; 65x50 FSHA, FSJA;  
80x65 FSGA, FSHA, FSJA, FSKA;  
100x80 FSGA, FSHA, FSJA;  
125x100 FSKA

**Model EA**

100x65 FSKA; 100x80 FSGCA, FSHCA;  
125x100 FSJCA, FSLA;  
150x100 FSKA, FSNA;  
150x125 FSHA, FSJA, FSKA, FSLA;  
200x150 FSHA, FSJA, FSKA, FSLA, FSNA;  
250x200 FSLA, FSNA



111-5	Mating Ring	Ceramic	1
111-4	Seal Ring	Carbon	
111-3	Friction Ring	NBR	
111-2	Coil Spring	Stainless Steel	
111-1	Spring Holder	Stainless Steel	
No.	Part Name	Material	Qty

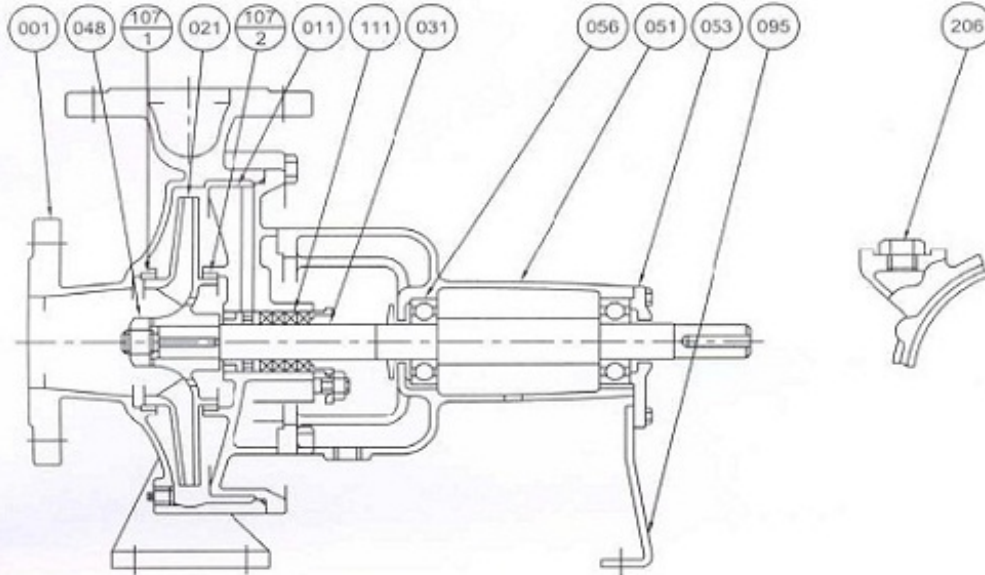
111-6	Cup Gasket	NBR	1
111-5	Mating Ring	Ceramic	
111-4	Seal Ring	Carbon	
111-3	Bellows	NBR	
111-2	Spring	Stainless Steel	
111-1	Spring Holder	Stainless Steel	
No.	Part Name	Material	Qty

207	Plug	Steel	1
111	Mechanical Seal	-	
107-2	Casing Ring	Bronze	
107-1	Casing Ring	Bronze	1
095	Stay	Steel	
056	Ball Bearing	-	2
053	Bearing Cover	Cast Iron	1
051	Bearing Housing		
048	Impeller Nut	Brass	1
031	Shaft	Stainless Steel	
021	Impeller	Bronze	
011	Casing Cover	Cast Iron	
001	Casing		
No.	Part Name	Material	Qty

# (2/2) Construction

Pump name 125x100 FS2JCA 5

Customer	Date 01-February -2021	Company
Contact	Item no.	Issued by
Phone	Project	Phone
E-mail	Project ID	E-mail

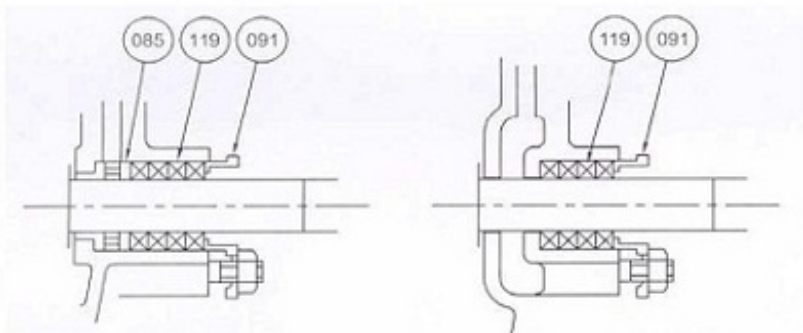


**With Lantern Ring**

50x40 FSHA; 65x50 FSHA, FSJA;  
80x65 FSGA, FSHA;  
100x80 FSGA; 125x100 FSLA;  
150x100 FSKA, FSNA;  
150x125 FSKA, FSLA;  
200x150 FSJA, FSLA, FSNA;  
250x200 FSLA, FSNA

**Without Lantern Ring**

80x65 FSJA, FSKA;  
100x65 FSKA;  
100x80 FSHA, FSJA, FSGCA, FSHCA;  
125x100 FSJCA, FSKA;  
150x125 FSHA, FSJA;  
200x150 FSHA, FSKA;



119	Gland Packing	Non-Asbestos	4 or 5
091	Gland	Bronze	1
085	Lantern Ring		
No.	Part Name	Material	Qty

119	Gland Packing	Non-Asbestos	4 or 5
091	Gland	Bronze	1
No.	Part Name	Material	Qty

207	Plug	Steel	1
111	Gland Packing	Non-Asbestos	4 or 5
107-2	Casing Ring	Bronze	1
107-1	Casing Ring		
095	Stay	Steel	1
056	Ball Bearing	-	2
053	Bearing Cover	Cast Iron	1
051	Bearing Housing		
048	Impeller Nut	Brass	
031	Shaft	Stainless Steel	
021	Impeller	Bronze	
011	Casing Cover	Cast Iron	
001	Casing		
No.	Part Name	Material	Qty